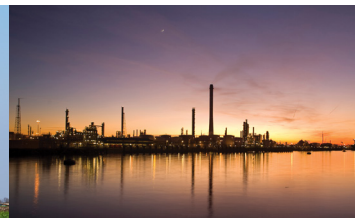
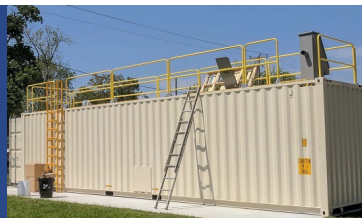




PRODUCT LINE BROCHURE

Water Treatment
Professionals



GlobalTreat.com

Global Treat, Inc. is an innovative industry leader, offering high-quality water disinfection systems and turn-key skid mounted pump packages. Global Treat's focus is on attention to detail, quality, safety, and user-friendly operational systems at a competitive price. Our systems have been installed in industrial, offshore, commercial, municipal water and wastewater industries.



GAS LEAK DETECTORS / GAS ALARM

- Up to 16 sensors in any combination
- Two common alarm relays
- Scanning display of all sensor readings
- Integral 90 dB horn
- Isolated 4-20mA outputs
- Modbus (RS485) Communication
- Password protected configuration



RESIDUAL CHLORINE ANALYZERS (Total / Free)

- Does not rely on sample and hold methods
- Simple calibration and maintenance
- Allows for rapid process control
- Three models to choose from
- Mounted on non-corrosive poly panel



AUTOMATIC FEED CONTROL VALVES

- Series OV-110 Omni Valve (up to 3000 PPD), and OV-1000 Omni Valve (up to 10,000 PPD)
- Auto feed of Chlorine Gas, Sulfur Dioxide Gas, Ammonia Gas, Carbon Dioxide Gas, Sodium Hypochlorite, and other Liquid chemicals
- Variety of control modes: Flow pacing, Residual, ORP, Compound Loop, Step Feed, Dual Input Feed Forward, Dual Set Point
- Optional Wall Panel with Remote Meter Panel
- Standard 6 ft Power Cable Length



ELECTROMAGNETIC (MAG) METERS & ULTRASONIC FLOWMETERS

Global Treat, Inc. provides a wide variety of Flow Meters

- Provides accurate flow measurements
- Many options to choose from
- Applications include: Chemical feed, Water & Wastewater, Oil & Gas, Agriculture, Food & Beverage, and Pharmaceutical



CHLORINE DIOXIDE GENERATORS

Generators are highly efficient, easy to operate, and safely produce a Chlorine Dioxide solution.

- Two or Three Chemical Precursor
- Manual or Automatic Configuration
- Mounted on non-corrosive poly panel



CHLORINE DIOXIDE SOLUTION

- Chlorine Dioxide Solution (ClO₂)
- 3000 ppm, 99.5% Pure
- Available in a variety of containers ranging from 5 gallon pails to 265 gallon totes



GlobalTreat.com



WATER DISINFECTION EQUIPMENT – HYDRO INSTRUMENTS

Hydro Instruments has been manufacturing vacuum solution feed equipment for chlorine, sulfur dioxide, carbon dioxide, and ammonia since 1978. Hydro's equipment is constructed by machining (rather than injection molding), therefore providing more durable products.

TABLET FEEDERS

Compact gravity flow Tablet Feeders provide a chemical dose ideal for potable and wastewater systems.

- Manufactured from non-corrosive materials for durability.
- Easy to install with flows ranging from 500 GPD to 400,000 GPD.



MINERAL OIL / LUBRICANT

- Food Grade, NSF
- For Water Well Pumps & Gear Bearings
- Available in 5 Gallon Buckets & 55 Gallon Drums



CHEMICAL DILUTION TROUGH

Water treatment equipment for diluting acids and other chemicals used in cooling towers. Significantly extends the service life of cooling tower basins and sump pumps. Available in PVC or CPVC.

MODEL	MAX ACID FLOW
MICRO	250 gpd
MACRO	500 gpd
MEGA	750 gpd



VAPORIZER / EVAPORATOR

Most advanced, highest quality, and efficient vaporizer on the market. For Chlorine (10,000 ppd), Sulfur Dioxide (8,000 ppd), or Ammonia (2,500 ppd) Two different models to choose from.

VPH-10000-1	VPH-10000-2
Utilized recirculation pump for improved heat transfer efficiency	Does not require a water circulating pump
18kW Heater with recirculating pump for maximum heat transfer	18kW Heater Directly mounted in the water tank



GAS CHLORINATOR REPAIRS

Global Treat Inc's skilled technicians repair all brands of Chlorinators

- Pressure and Vacuum Tested
- Quick turn-around



GlobalTreat.com



EMERGENCY SHUTOFF VALVES

Global Treat, Inc. provides the industry's finest chemical gas feeders in addition to high quality safety control monitors and automatic shut off valve systems. Use of Emergency Shut off Valve systems can greatly reduce the risk of a significant gas release, such as Chlorine, Sulfur Dioxide and Ammonia. The system will close the gas cylinder valve(s) within seconds of activating a manual panic button, an external alarm signal, or an internal fail-safe alarm signal.



MEGA-SWEET INDUCTION SYSTEM – Chemical or Air (Submersible Wastewater Efficient Effluent Treatment Package)

Used to create a vacuum for drawing, mixing, and dispersing chemicals or air into the contact chamber

- Requires very little maintenance
- Reliable solution for new installations or for retro-fitting existing systems

3/4 and 1 Hp Model	
APPLICATION	MAX
Chemical / Gas	350-650 PPD
Chemical / Liquid	30-80 GPH
Oxygen (O ₂)	392-729 SCFD

5 Hp Mode	
APPLICATION	MAX
Chemical / Gas	4,000 PPD
Chemical / Liquid	20 GPM
Oxygen (O ₂)	4,485 SCFD



FIBERGLASS SHELTERS

Corrosion resistant shelters are insulated and easy to install

- Low maintenance and available in various sizes.
- Pre-wired and have corrosion- resistant fixtures.
- Standard equipment includes: fan (intake or exhaust), vent, electrical panel, duplex outlets, vapor-tight lamp, stainless steel hardware, and equipment mounting provisions.



SCALES

Chemical Monitoring Systems (Hydraulic and Electronic)

Accurately monitor how much chlorine, sulfur dioxide or ammonia is fed from ton containers or 150 lb. cylinders and know exactly how much chemical remains. Four different local displays available. Also remotely monitor through SCADA or PLC. 5-year warranty.



CHEMICAL FEED ACCESSORIES

High quality chemical feed accessories including: Back Pressure, Pressure Relief, Calibration Cylinders, Diaphragm Protected Pressure Gauges and Pulsation Dampeners and Chemical Injection Diffusers.

Chemical injection corporation stops are available in a variety of sizes & materials: 1/2", 3/4", 1", 1 1/4", 1 1/2" and 2" sizes.

Wetted materials available include: PVC, CPVC, PVDF and Stainless.



- Sales
- Service
- Repair

Global Treat, Inc.
7774 Louetta Road
Spring, Texas 7737

Phone: 281-370-3425
Email: sales@globaltreat.com
GlobalTreat.com