

Mag Meter Series GTI-FM

ULTRA SMALL - ECONOMICAL LOW FLOW MEASUREMENT - CHEMICAL RESISTANT



Flow
Sensor

The remote indicator
displays flow rate
and total flow.

APPLICATIONS:

- Water
- Brine
- Lime Slurries
- Landfill Leachate
- Fertigation
- Chemical Injection
- Custics
- Acids
- Polymers
- Admixture Batching

Flow Sensor Features:

- Compatible with pulsating flow pumps
- Accurate
- Flow range from 0.8 to 950 GPH
- Pressures to 150 PSI
- Volumetric flow rate measurement independent of fluid viscosity, density and temperature
- No moving parts for zero maintenance
- LED status indicator
- Empty Pipe Detection (standard)

Indicator / Totalizer Specifications

- Dual line LED rate Indicator
- Totalizer with scalable 4-20mA output and two programmable relay outputs.
- NEMA 4X Front
- Universal 85-265 VAC
- Includes 24 VDC
- 100mA Excitation power supply output
- Accepts 4-20mA Output
- Large Dual-Line 6-Digit Display, 0.60" & 0.46"
- Programmable Displays & Function Keys



Mag Meter

Series: GTI-FM

Model #GTI-FM-05

(Flow GPH: 0.8 - 15.8)

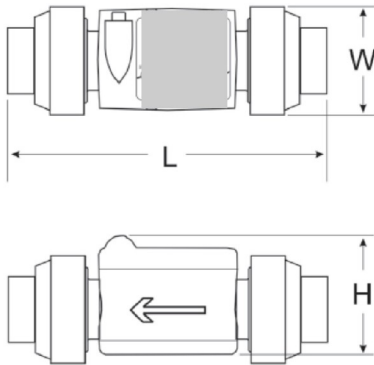
Model #GTI-FM-10

(Flow GPH: 8 - 159)

Model #GTI-FM-20

(Flow GPH: 45 - 950)

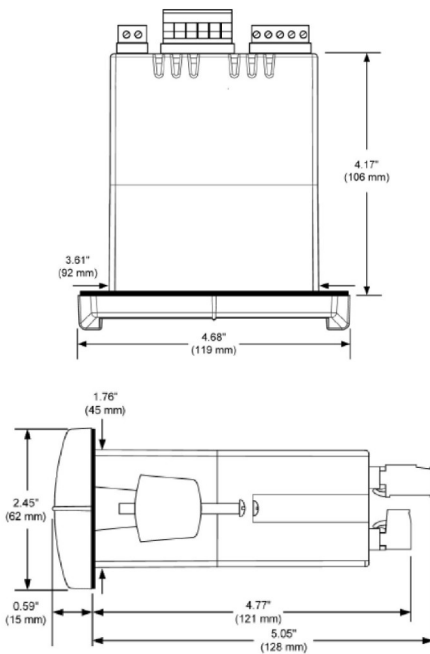
Sensor Dimensions



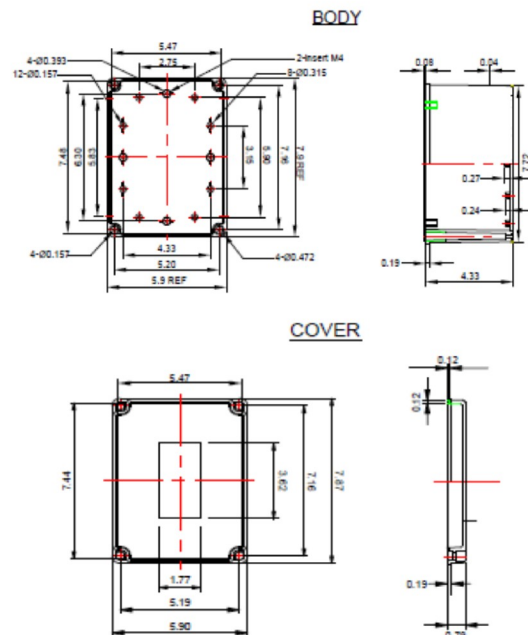
	GTI-FM-05	GTI-FM-10	GTI-FM-20
Flow GPH	0.8 - 15.8	8 - 159	45 - 950
L	5.55" (141mm)	5.55" (141mm)	6.73" (171mm)
W	1.89" (48mm)	1.89" (48mm)	2.36" (60mm)
H	2.01" (51mm)	2.09" (53mm)	2.52" (64mm)
OD	0.205" (5.2mm)	0.394" (10mm)	0.787" (20mm)
*Conn.	1/2" Union	1/2" Union	1" Union

**NPT or Slip-on Connection*

Indicator/Totalizer Dimensions



Enclosure Dimensions



BULLETIN Mag Meter, Pg 2, 2/17

