

ELECTRONIC
CHEM-SCALE™
FOR CHEMICAL DAY TANKS

SAFELY MONITOR
 CHEMICAL USAGE AND
 LEVEL

WARN OF DANGEROUS
 OVER AND UNDER FEED
 CONDITIONS

LEVEL ALARMS PREVENT
 TANK FROM ACCIDENTALLY
 RUNNING EMPTY

REMOTE MONITORING
 REDUCES OPERATOR
 EXPOSURE TO CHEMICALS

The Electronic Chem-Scale™ provides a simple and accurate way to monitor how much chemical is being fed and how much remains in chemical day tanks. The standard pivoted platform design of the Chem-Scale has no moving parts and uses a single shear beam load cell to accurately measure the current weight of the chemical. The heavy duty steel scale platform is coated with our Tuf-Coat™ 80 mil thick poly-urea finish to provide extended corrosion protection in harsh chemical room environments. Adjustable tank restraint clips are included with the Chem-Scale to help keep your tank securely located on the platform.

The Electronic Chem-Scale is available in many different sizes and capacities allowing you to closely match the scale to your specific tank requirements.

Using a scale is the most accurate method available for monitoring chemical inventory and the proven design of the Electronic Chem-Scale insures that your monitoring ability will be available day in and day out.



Standard Pivoted Single Load Cell Model



High Accuracy 4-Load Cell Model



WIZARD 4000
 (1 TO 4 CHANNEL)
 Bulletin 400



SOLO G2
 (1 OR 2 CHANNEL)
 Bulletin 516



HYPO TRAK
 For sodium hypo-
 chlorite. Bulletin 516

The Electronic Chem-Scale can be ordered with the Wizard 4000, SOLO G2 or HYPO TRAK Digital Weight Indicator for a complete monitoring system.



MODELS & ORDERING INFORMATION

Electronic Chem-Scale™ — Single Load Cell Models (1/4 of 1% full scale accuracy)

Chem-Scale models below include Tuf-Coat™ steel platform with (4) tank restraint clips and electronic load cell with 20 feet of cable. Longer cable length available upon request. Digital weight indicator sold separately - see information on SOLO G2, Wizard 4000 and Hypo Trak indicators. **Consult factory for custom sizes and capacities.**

Complete model numbers below by filling in capacity using the following:

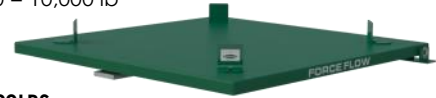
FOR LB: 5 = 500 lb, 10 = 1000 lb, 20 = 2000 lb, 30 = 3000 lb, 40 = 4000 lb, 50 = 5000 lb, 100 = 10,000 lb

EXAMPLE 40-DR30LP = 40" platform with 3000 lb capacity

FOR KG: 5K = 500 kg, 1K = 1000 kg, 15K = 1500 kg, 20K = 2000 kg, 25K = 2500 kg

EXAMPLE 50-DR25KLP = 50" platform with 2500 kg capacity

For 316 Stainless Steel, add an "S" to model number after the "P". For example 30-DR20LPS



MODEL	PLATFORM SIZE - inches (mm)	CAPACITY	TANK DIAMETERS	SHIPPING WT.
27-DR__LP	27 1/2 x 27 1/2 x 2 (699 x 699 x 51)	Up to 1000 lb (500kg)	22" to 27 1/2" (559 - 699mm)	70 lb (32 kg)
30-DR__LP	30 x 30 x 3 1/4 (762 x 762 x 83)	Up to 5000 lb (2500 kg)	20" to 30" (508 - 762mm)	135 lb (62 kg)
36-DR__LP	36 x 36 x 3 1/4 (914 x 914 x 83)	Up to 5000 lb (2500 kg)	26" to 36" (660 - 914mm)	165 lb (75 kg)
40-DR__LP	40 x 40 x 3 1/4 (1016 x 1016 x 83)	Up to 5000 lb (2500 kg)	30" to 40" (762 - 1016mm)	225 lb (103 kg)
50-DR__LP	50 1/2 x 50 1/2 x 3 1/4 (1283 x 1283 x 83)	Up to 5000 lb (2500 kg)	40" to 50" (1016 - 1270mm)	305 lb (139 kg)
54-DR__LP	54 x 54 x 3 1/4 (1372 x 1372 x 83)	Up to 5000 lb (2500 kg)	44" to 54" (1118 - 1372mm)	317 lb (144 kg)
60-DR__LP	60 x 60 x 3 1/4 (1524 x 1524 x 83)	Up to 10,000 lb (5000 kg)	50" to 60" (1270 - 1524mm)	475 lb (216 kg)

Electronic High Accuracy Chem-Scale — Four (4) Load Cell Models (1/10 of 1% full scale accuracy)

Chem-Scale models below include Tuf-Coat™ steel platform, electronic summing box and (4) electronic load cells each with 20 feet of cable. Longer cable lengths available upon request. Digital weight indicator not included - see information on SOLO G2, Wizard 4000 and Hypo Trak indicators. Tank restraint clips optional. **Consult factory for custom sizes and capacities.**

Complete model numbers below by filling in capacity using the following:

FOR LB: 5 = 500, lb 10 = 1000 lb, 20 = 2000 lb, 30= 3000 lb, 40 = 4000 lb, 50 = 5000 lb.

EXAMPLE 40-DR30LP = 40" platform with 3000 lb capacity

FOR KG: 5K = 500 kg, 1K = 1000 kg, 15K—1500 kg, 20K = 2000 kg, 25K = 2500 kg

EXAMPLE 40-DR25KLP = 40" platform with 2500 kg capacity

For 316 Stainless Steel, add an "S" to model number after the "P". For example 30-DR20LPSHA4.



MODEL	PLATFORM SIZE	CAPACITY	TANK DIAMETERS	SHIPPING WT.
27-DR__LPHA4	27 1/2 x 27 1/2 x 2 (699 x 699 x 51)	Up to 1000 lb (500kg)	Up to 27.5" (51mm)	70 lb (32 kg)
30-DR__LPHA4	30 x 30 x 3 1/4 (762 x 762 x 83)	Up to 5000 lb (2500 kg)	Up to 30" (762mm)	135 lb (62 kg)
36-DR__LPHA4	36 x 36 x 3 1/4 (914 x 914 x 83)	Up to 5000 lb (2500 kg)	Up to 36" (914mm)	165 lb (75 kg)
40-DR__LPHA4	40 x 40 x 3 1/4 (1016 x 1016 x 83)	Up to 5000 lb (2500 kg)	Up to 40" (1016mm)	225 lb (103 kg)
50-DR__LPHA4	50 1/2 x 50 1/2 x 3 1/4 (1283 x 1283 x 83)	Up to 5000 lb (2500 kg)	Up to 50.5" (1283mm)	305 lb (139 kg)
54-DR__LPHA4	54 x 54 x 3 1/4 (1372 x 1372 x 83)	Up to 5000 lb (2500 kg)	Up to 54" (1372mm)	317 lb (144 kg)
60-DR__LPHA4	60 x 60 x 3 1/4 (1524 x 1524 x 83)	Up to 10,000 lb (5000 kg)	Up to 60" (1524mm)	475 lb (216 kg)

Electronic Chem-Scale — High Capacity Models for Large Tanks

Consult factory for available capacities and load cell configurations.

MODEL	PLATFORM SIZE inches (mm)	CAPACITY	SHIPPING WT.
72-DR100LP	72 x 72 x 3 1/2 (1829 x 1829 x 89)	Up to 10,000 lb (5000 kg)	Consult Factory
72-DR__LPHA4	72 x 72 x 6 (1829 x 1829 x 152)	Up to 20,000 lb (10,000 kg)	Consult Factory
84-DR__LPHA4	84 x 84 x 12 (2134 x 2134 x 305)	Up to 40,000 lb (20,000 kg)	Consult Factory
96-DR__LPHA4	96 x 96 x 16 1/2 (2438 x 2438 x 419)	Up to 40,000 lb (20,000 kg)	Consult Factory

